



## **INDUSTRIAL ENCLOSURES** *for alternative applications*

*Critical Power Systems, Inc. is proud to offer **Industrial-Rated Enclosures** for backup power systems in challenging or alternative applications.*

***Engineered to meet the challenges posed by these markets:***

water/wastewater treatment • transportation—railroad/bridges/tunnels/toll/lane control  
manufacturing, process control • machine builders • food and beverage • pulp and paper  
automotive • ISP- BDA/DAS • oil and gas • marine





# INDUSTRIAL ENCLOSURES *for alternative applications*

*Industrial Enclosures are engineered to accommodate challenging power quality and emergency system applications like:*

- AC Input, AC or DC output
- Extended runtime configurations
- Industrial environments
- Shock and vibration
- Outdoor
- Dust/dirt
- Mobile/portable
- High temperature, direct sun-light
- Rain, snow, dripping water, humidity
- Caustic chemical, corrosive environment
- Free standing, wall/pole mount



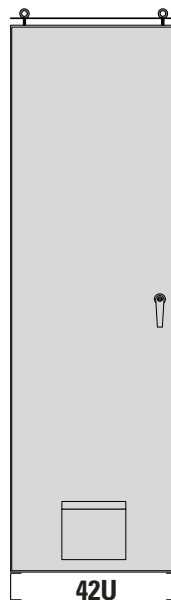
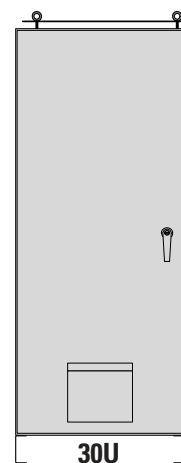
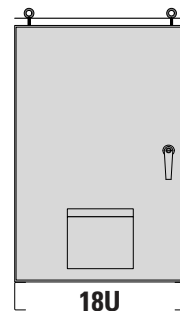
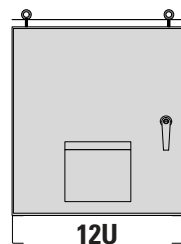
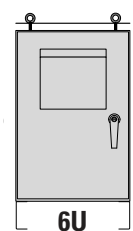
## Standard Design

### Construction:

- NEMA Type 12, 3/R, 4 and IP rated
- 6, 12, 18, 30 and 42U heights
- 24" W x 36" D
- Carbon steel
- RAL-7035 light gray paint
- Single door, dual-access with front and rear door
- Locking, pad-locking door with 3-point latching mechanism and hidden hinges
- Lifting eyes
- 4-inch "C" channel leg stands
- Foam in place, water and chemical resistant gasketing
- 2 sets/4 post heavy duty mounting rails for rack mounted equipment
- 6-inch gland plate for input/output connections
- Media pocket on front door

### Thermal Management

- Door mounted, 6-inch ventilation fan- 133 CFM, user defined voltage
- Door mounted, 6-inch ventilation louvers, grill and filter



## Standard Options

### Construction:

- Stainless Steel (304/316L)
- Custom paint- user specified, standard RAL colors
- Front door only
- User defined security, access control and door handles
- EMI/RFI attenuating gasketing
- Seismic mounting and vibration attenuation
- Sliding and fixed shelves
- Sub-panel for din-rail mounted equipment
- Interior lighting and door window kits

### Thermal Management

- Full interior Insulation-R7
- Full coverage sunscreen, door drip shields
- 10" ventilation fan- 306 CFM
- Air conditioning- user or application defined BTU and operating voltage
- Mission critical venting—mechanical louvers, H2 sensor and controls (required for Type 4/X, sealed enclosure applications)
- Heater
- Thermostat or timer
- 18-inch leg stands or heavy duty casters

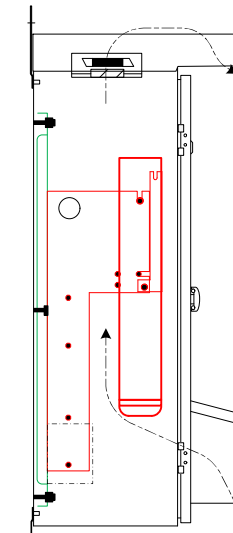
### Power Input/Output

- Custom power distribution din rail
- Main power disconnect/circuit breaker
- Terminal blocks for main power input/output and accessory power
- Terminal blocks and relays for dry contact communication
- Convenience receptacles—user specified

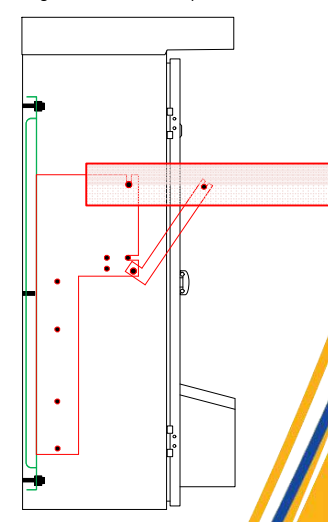
## Wall-Mount Enclosures

- 4U wall-mount power enclosure
- 6U wall/pole mounted, freestanding convertible enclosure
- Wall-mount brackets
- Insulated cabinet
- Internal UPS mounting plate

Right side UPS in Normal position



Right side UPS in Service position



## Understanding NEMA Ratings

### NEMA 1

(IP10- Indoor\*)

**Protection from:** falling dirt

### NEMA 12

(IP52- Indoor\*)

**Protection from:** falling dirt, dust, lint, dripping and lightly splashed liquids

### NEMA 3R

(IP14- Indoor/outdoor\*)

**Protection from:** falling dirt, rain, sleet, snow, ice

### NEMA 3

(IP54- Indoor/outdoor\*)

**Protection from:** falling dirt, rain, sleet, snow, ice and windblown dust

### NEMA 4

(IP66- Indoor/outdoor\*)

**Protection from:** falling dirt, rain, sleet, snow, ice, windblown dust, splashing water, hose-directed water

"X"- Stainless steel, 304/316 options, corrosion resistance

\* protect user from incidental contact with equipment

## Custom Options\*

### Construction:

- NEMA Type 12, 3/R, 4/X and IP ratings
- User or application-defined dimensions; custom H x W x D
- Carbon, stainless steel (304/316L) and aluminum; user and application-specified gauges
- One, two or multi-door front, or dual access with doors front and rear
- Marine-grade and corrosion resistant coatings
- Fixed-mount equipment installation including large 3P UPS
- DC power systems—chargers and custom battery solutions
- Battery rack-mounting

*\* All "Standard Options" listed on inside page can be selected as part of a full custom enclosure*



**Critical Power Systems, Inc.**

**(662) 401-8831**

[demps@criticalpowersystemsinc.tech](mailto:demps@criticalpowersystemsinc.tech)

[criticalpowersystemsinc.tech](http://criticalpowersystemsinc.tech)

2043 Emily Street, Tupelo, MS, 38804